

***Anti-BLBP (B-FABP)***  
*(brain-type lipid binding protein)*

**Product Information:**

---

1)	<b>Catalog #:</b>	MSFR100290
	<b>Item Name:</b>	BLBP (B-FABP) pAb (Rb) 20ug
	<b>Size :</b>	20µg (affinity-purified with antigen polypeptide)
	<b>Species :</b>	Rabbit
	<b>Product Code :</b>	BLBP-Rb-Af400
	<b>RRID :</b>	AB_2571664
2)	<b>Catalog #:</b>	MSFR100300
	<b>Item Name:</b>	BLBP (B-FABP) pAb (Rb) 50ug
	<b>Size :</b>	50µg (affinity-purified with antigen polypeptide)
	<b>Species :</b>	Rabbit
	<b>Product Code :</b>	BLBP-Rb-Af400
	<b>RRID :</b>	AB_2571664
3)	<b>Catalog #:</b>	MSFR100310
	<b>Item Name:</b>	BLBP (B-FABP) pAb (GP) 20ug
	<b>Size :</b>	20µg (affinity-purified with antigen polypeptide)
	<b>Species :</b>	Guinea pig
	<b>Product Code :</b>	BLBP-GP-Af291
	<b>RRID :</b>	AB_2571665
4)	<b>Catalog #:</b>	MSFR100320
	<b>Item Name:</b>	BLBP (B-FABP) pAb (GP) 50ug
	<b>Size :</b>	50µg (affinity-purified with antigen polypeptide)
	<b>Species :</b>	Guinea pig
	<b>Product Code :</b>	BLBP-GP-Af291
	<b>RRID :</b>	AB_2571665

---

**Formulation :** Liquid ; 200 µg/ml in PBS with 0.05% NaN<sub>3</sub>.  
(affinity-purified with antigen polypeptide)

**Storage :** Store at cool temp (2-10°C).

The antibody can be stored at 2-10°C.

The antibody can be also aliquoted and stored at -80°C for long-term storage.

Avoid repeated freeze-thawing. Non-hazardous. No MSDS required.

**Species :** rabbit / guinea pig , polyclonal

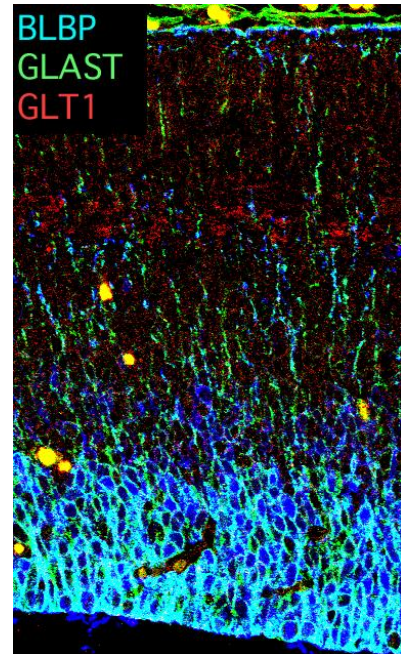
**Antigen :** rat BLBP (whole sequence)

ご注意：本商品には 0.1 % 未満のアジ化ナトリウムが入っています。誤って目や口に入ったり、皮膚に付着した場合は大量の水で洗い流してください。

**Specificity** : Mouse (others not tested)

Immunoblot detects a single protein band at 15 kDa. BLBP is specific to the radial glia/astrocyte lineage. Among the lineage markers, BLBP stains cell bodies of radial glia and astrocytes more strongly than others such as GLAST and GFAP, while it stains weakly processes of this lineage.

**Applications** : In general, affinity-purified antibody is used at around 1 microgram/ml for immunoblot and immunohistochemistry. The most appropriate concentration should be determined by users, because it depends on contents in given cells, tissues and organs.



**Research Use** : For research use only, not for use in diagnostic procedures.

**Remarks** : If you have no special preference for species, this rabbit antibody is the best one to choose. This guinea pig antibody is specific, but has weak background staining on the nucleus.

**Reference** : Yamada, K., Fukaya, M., Shibata, T., Kurihara, H., Tanaka, K., Inoue, Y., Watanabe, M. (2000) Dynamic transformation of Bergmann glial fibers proceeds in correlation with dendritic outgrowth and synapse formation of cerebellar Purkinje cells. **J. Comp. Neurol.** 418:106-120.

ご注意：本商品には 0.1 % 未満のアジ化ナトリウムが入っています。誤って目や口に入ったり、皮膚に付着した場合は大量の水で洗い流してください。

Distributor : NITTOBO MEDICAL CO., LTD  
TEL : +81-(0)3-4582-5451  
email : nmd-tokuhan@nittobogrp.com

Manufacture : FRONTIER INSTITUTE CO., LTD