

## ***Anti-CAST1***

*(ELKS/RAB6-interacting/CAST family member-1)*

**Code Number** : CAST-Rb-Af460 (rabbit, RRID : AB\_2571670)

: CAST-GP-Af850 (guinea pig, RRID : AB\_2571671)

**Size** : 20 µg and 50 µg / See label on vial

(affinity-purified with antigen polypeptide)

**Formulation** : Liquid ; 200 µg/ml in PBS with 0.05% NaN<sub>3</sub>.

(affinity-purified with antigen polypeptide)

**Storage** : Store at cool temp. (2-10°C)

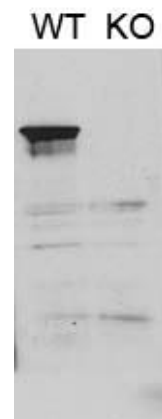
The antibody can be stored at 2-10°C. The antibody can be also aliquotted and stored at -80°C for long-term storage. Avoid repeated freeze-thawing. Non-hazardrous. No MSDS required.

**Species** : rabbit / guinea pig, polyclonal

**Antigen** : mouse CAST1, 113-161 aa (NM\_178085)

**Specificity** : mouse (others not tested)

Immunoblot detects a single protein band at 120 kDa in wild-type, but not CAST1-knockout, brains. This antibody labels presynaptic active zone in in wild-type, but not CAST1-knockout, brains. (see reference 1).



**Applications** : In general, affinity-purified antibody is used at around 1 microgram/ml for immunoblot and immunohistochemistry. The most appropriate concentration should be determined by users, because it depends on contents in given cells, tissues and organs.

**Research Use** : For research use only, not for use in diagnostic procedures.

**Remarks** :

**Reference** : 1) Uchigashima M, Ohtsuka T, Kobayashi K, Watanabe M. Striatal dopamine synapses are neuroligin-2-mediated contact between dopaminergic presynaptic and GABAergic postsynaptic structures. **Proc Natl Acad Sci USA**, in press

ご注意 : 本商品には 0.1 % 未満のアジ化ナトリウムが入っています。誤って目や口に入ったり、皮膚に付着した場合は大量の水で洗い流してください。

Distributor : NITTOBO MEDICAL CO., LTD  
TEL : +81-(0)3-4582-5451  
email : nmd-tokuhan@nittobogrp.com

Manufacture : FRONTIER INSTITUTE CO., LTD