

Anti-CB1

(cannabinoid receptor-1)

Product Information:

1)	Catalog #:	MSFR100580
	Item Name:	CB1 pAb (Rb) 20ug
	Size :	20µg (affinity-purified with antigen polypeptide)
	Species :	Rabbit
	Product Code :	CB1-Rb-Af380
	RRID :	AB_2571591
2)	Catalog #:	MSFR100590
	Item Name:	CB1 pAb (Rb) 50ug
	Size :	50µg (affinity-purified with antigen polypeptide)
	Species :	Rabbit
	Product Code :	CB1-Rb-Af380
	RRID :	AB_2571591
3)	Catalog #:	MSFR100600
	Item Name:	CB1 pAb (Go) 20ug
	Size :	20µg (affinity-purified with antigen polypeptide)
	Species :	Goat
	Product Code :	CB1-Go-Af450
	RRID :	AB_2571592
4)	Catalog #:	MSFR100610
	Item Name:	CB1 pAb (Go) 50ug
	Size :	50µg (affinity-purified with antigen polypeptide)
	Species :	Goat
	Product Code :	CB1-Go-Af450
	RRID :	AB_2571592
5)	Catalog #:	MSFR100620
	Item Name:	CB1 pAb (GP) 20ug
	Size :	20µg (affinity-purified with antigen polypeptide)
	Species :	Guinea pig
	Product Code :	CB1-GP-Af530
	RRID :	AB_2571593
6)	Catalog #:	MSFR100630
	Item Name:	CB1 pAb (GP) 50ug
	Size :	50µg (affinity-purified with antigen polypeptide)
	Species :	Guinea pig
	Product Code :	CB1-GP-Af530
	RRID :	AB_2571593

Formulation : Liquid ; 200 µg/ml in PBS with 0.05% NaN₃.

(affinity-purified with antigen polypeptide)

Storage : Store at cool temp. (2-10°C)

The antibody can be stored at 2-10°C. The antibody can be also aliquoted and stored at -80°C for long-term storage. Avoid repeated freeze-thawing. Non-hazardous. No MSDS required.

Species : rabbit / guinea pig / goat

polyclonal

ご注意 : 本商品には 0.1 % 未満のアジ化ナトリウムが入っています。誤って目や口に入ったり、皮膚に付着した場合は大量の水で洗い流してください。

Distributor : NITTOBO MEDICAL CO., LTD

Manufacture : FRONTIER INSTITUTE CO., LTD

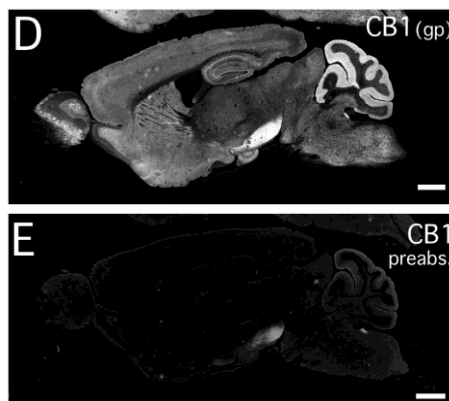
TEL : +81-(0)3-4582-5451

email : nmd-tokuhan@nittobogrp.com

Antigen : mouse CB1, C-terminal 31 aa
(NM007726),

Specificity : Mouse (others not tested)

Immunoblot detects a single protein band at 52 kDa. This selectively stains nerve terminals and preterminals of particular excitatory and inhibitory neurons.



Applications : In general, affinity-purified antibody is used at around 1 microgram/ml for immunoblot and immunohistochemistry. The most appropriate concentration should be determined by users, because it depends on contents in given cells, tissues and organs.

Research Use : All rabbit, guinea pig, and goat antibodies are similar in titer and specificity. For research use only, not for use in diagnostic procedures.

Remarks : This antibody is as specific as guinea pig and goat ones.

Reference : 1) Fukudome, Y., Ohno-Shosaku, T., Matsui, M., Omori, Y., Fukaya, M., Taketo, M., Watanabe, M., Manabe, M., Kano, M. (2004) Two distinct classes of muscarinic action on hippocampal inhibitory synapses: M2-mediated direct suppression and M1/M3-mediated indirect suppression through endocannabinoid signaling. **Eur. J. Neurosci.** 19:2682-2692.

2) Yoshida, T., Fukaya, M., Uchigashima, M., Kamiya, H., Kano, M., Watanabe, M. (2006) Localization of diacylglycerol lipase- α around postsynaptic spine suggests close proximity between production site of an endocannabinoid, 2-arachidonoyl-glycerol, and presynaptic cannabinoid CB1 receptor. **J. Neurosci.** 26: 4740-4751.

3) Uchigashima M, Narushima M, Fukaya M, Katona I, Kano M, Watanabe M: Subcellular arrangement of molecules for 2-arachidonoyl-glycerol-mediated retrograde signaling and its physiological contribution to synaptic modulation in the striatum. **J Neurosci**, 27:3663-3676, 2007.

ご注意 : 本商品には 0.1 % 未満のアジ化ナトリウムが入っています。 誤って目や口に入ったり、皮膚に付着した場合は大量の水で洗い流してください。