

## *Anti-CHT1*

*(high-affinity choline transporter-1)*

### Product Information:

---

1)	<b>Catalog #:</b>	MSFR100840
	<b>Item Name:</b>	CHT1 pAb (Rb) 20ug
	<b>Size :</b>	20µg (affinity-purified with antigen polypeptide)
	<b>Species :</b>	Rabbit
	<b>Product Code :</b>	CHT-Rb-Af580
	<b>RRID :</b>	AB_2571676
2)	<b>Catalog #:</b>	MSFR100850
	<b>Item Name:</b>	CHT1 pAb (Rb) 50ug
	<b>Size :</b>	50µg (affinity-purified with antigen polypeptide)
	<b>Species :</b>	Rabbit
	<b>Product Code :</b>	CHT-Rb-Af580
	<b>RRID :</b>	AB_2571676
3)	<b>Catalog #:</b>	MSFR100860
	<b>Item Name:</b>	CHT1 pAb (Go) 20ug
	<b>Size :</b>	20µg (affinity-purified with antigen polypeptide)
	<b>Species :</b>	Goat
	<b>Product Code :</b>	CHT-Go-Af890
	<b>RRID :</b>	AB_2571677
4)	<b>Catalog #:</b>	MSFR100870
	<b>Item Name:</b>	CHT1 pAb (Go) 50ug
	<b>Size :</b>	50µg (affinity-purified with antigen polypeptide)
	<b>Species :</b>	Goat
	<b>Product Code :</b>	CHT-Go-Af890
	<b>RRID :</b>	AB_2571677
5)	<b>Catalog #:</b>	MSFR100880
	<b>Item Name:</b>	CHT1 pAb (GP) 20ug
	<b>Size :</b>	20µg (affinity-purified with antigen polypeptide)
	<b>Species :</b>	Guinea pig
	<b>Product Code :</b>	CHT-GP-Af500
	<b>RRID :</b>	AB_2571678
6)	<b>Catalog #:</b>	MSFR100890
	<b>Item Name:</b>	CHT1 pAb (GP) 50ug
	<b>Size :</b>	50µg (affinity-purified with antigen polypeptide)
	<b>Species :</b>	Guinea pig
	<b>Product Code :</b>	CHT-GP-Af500
	<b>RRID :</b>	AB_2571678

---

**Formulation** : Liquid ; 200 µg/ml in PBS with 0.05% NaN<sub>3</sub>.

**Storage** : Store at cool temp. (2-10°C)

The antibody can be stored at 2-10°C. The antibody can be also aliquoted and stored at -80°C for long-term storage. Avoid repeated freeze-thawing. Non-hazardous. No MSDS required.

ご注意 : 本商品には 0.1 % 未満のアジ化ナトリウムが入っています。誤って目や口に入ったり、皮膚に付着した場合は大量の水で洗い流してください。

**Species** : goat / guinea pig / rabbit  
polyclonal

**Antigen** : mouse CHT1, 531-580 aa  
(BC065089)

**Specificity** : Mouse (others not tested)  
Immunoblot detects a single protein band  
at 60 kDa.

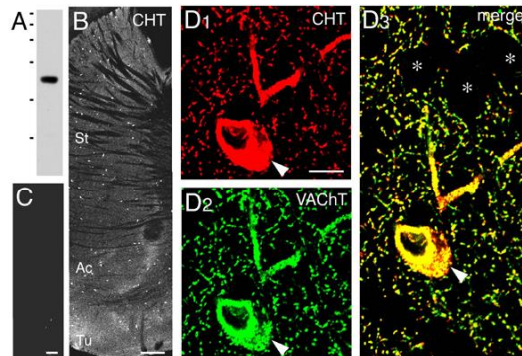
This selectively stains cholinergic neurons, including their dendrites and axons.

**Applications** : In general, affinity-purified antibody is used at around 1 microgram/ml for immunoblot and immunohistochemistry. The most appropriate concentration should be determined by users, because it depends on contents in given cells, tissues and organs.

**Research Use** : For research use only, not for use in diagnostic procedures.

**Remarks** : If you have no special preference for species, this goat antibody is the best one to choose. This guinea pig antibody is as specific as goat one. If you have no special preference for species, goat CHT antibody is the best one to choose.

**Reference** : 1) Narushima M, Uchigashima M, Matsui M, Manabe T, Watanabe M, Kano M: Tonic enhancement of endocannabinoid-mediated retrograde suppression of inhibition by cholinergic interneuron activity in the striatum. **J. Neurosci.**, in press  
2) Miura, E., Fukaya, M., Sato, T., Sugihara, K., Asano, M., Yoshioka, K., Watanabe, M. (2006) Expression and distribution of JNK/SAPK-associated scaffold protein JSAP1 in developing and adult mouse brain. **J. Neurochem.** 97:1431-1446.



ご注意 : 本商品には 0.1 % 未満のアジ化ナトリウムが入っています。 誤って目や口に入ったり、皮膚に付着した場合は大量の水で洗い流してください。

Distributor : NITTOBO MEDICAL CO., LTD  
TEL : +81-(0)3-4582-5451  
email : nmd-tokuhan@nittobogrp.com

Manufacture : FRONTIER INSTITUTE CO., LTD