

Anti-Calbindin (CB-28kD)

Product Information:

1) Catalog #:	MSFR100390
Item Name:	Calbindin (CB-28KD) pAb (Rb) 20ug
Size :	20µg (1:10 diluted serum, equivalent 20□g)
Species :	Rabbit
Product Code :	Calbindin-Rb-Se0.1
RRID :	AB_2571568
2) Catalog #:	MSFR100400
Item Name:	Calbindin (CB-28KD) pAb (Go) 20ug
Size :	20µg (affinity-purified with antigen polypeptide)
Species :	Goat
Product Code :	Calbindin-Go-Af1040
RRID :	AB_2571569
3) Catalog #:	MSFR100410
Item Name:	Calbindin (CB-28KD) pAb (Go) 50ug
Size :	50µg (affinity-purified with antigen polypeptide)
Species :	Goat
Product Code :	Calbindin-Go-Af1040
RRID :	AB_2571569
4) Catalog #:	MSFR100420
Item Name:	Calbindin (CB-28KD) pAb (GP) 20ug
Size :	20µg (affinity-purified with antigen polypeptide)
Species :	Guinea pig
Product Code :	Calbindin-GP-Af280
RRID :	AB_2571570
5) Catalog #:	MSFR100430
Item Name:	Calbindin (CB-28KD) pAb (GP) 50ug
Size :	50µg (affinity-purified with antigen polypeptide)
Species :	Guinea pig
Product Code :	Calbindin-GP-Af280
RRID :	AB_2571570

Formulation : Liquid ; 200µg/ml in PBS with 0.05% NaN₃.

Storage : Store at cool temp (2-10°C).

The antibody can be stored at 2-10°C. The antibody can be also aliquoted and stored at -80°C for long-term storage. Avoid repeated freeze-thawing. Non-hazardous. No MSDS required.

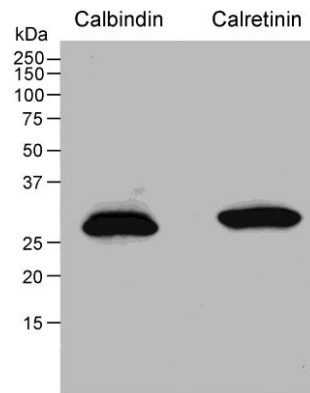
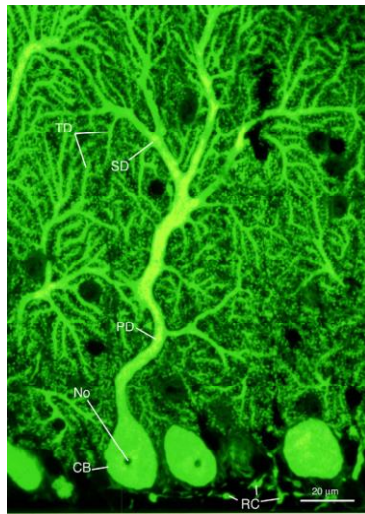
Species : rabbit / guinea pig / goat, polyclonal

Antigen : rat calbindin purified from rat brains for rabbit serum, mouse calbindin expressed in bacteria for guinea pig and goat antibodies.

ご注意 : 本商品には 0.1 % 未満のアジ化ナトリウムが入っています。誤って目や口に入ったり、皮膚に付着した場合は大量の水で洗い流してください。

Specificity : mouse (others not tested)

Immunoblot detects a single protein band at 28 kDa.



Applications : The rabbit antiserum contains can be used for cryosections and microslicer sections at the final dilution of 1:10000-1:40000, and for paraffin section at the final dilution of 1:4000-1:10000. Affinity-purified antibody is used at around 1 microgram/ml for immunoblot and immunohistochemistry. The most appropriate dilution in given tissues should be determined by users, because it depends on contents in given cells, tissues and organs.

Research Use : For research use only, not for use in diagnostic procedures.

Remarks : If you have no special preference for species, rabbit and goat CB antibodies are primarily recommended.

Reference : 1) Nakagawa S, Watanabe M, Isobe T, Kondo H, Inoue Y: Cytological compartmentalization in the staggerer cerebellum, as revealed by calbindin immunohistochemistry for Purkinje cells. **J. Comp. Neurol.** 395:112-120, 1998
2) Miura E, Fukaya M, Sato T, Sugihara K, Asano M, Yoshioka K, Watanabe M: Expression and distribution of JNK/SAPK-associated scaffold protein JSAP1 in developing and adult mouse brain. **J. Neurochem.** 97:1431-1446, 2006
3) Yoshida T, Fukaya M, Uchigashima M, Kamiya H, Kano M, Watanabe M: Localization of diacylglycerol lipase- α around postsynaptic spine suggests close proximity between production site of an endocannabinoid, 2-arachidonoyl-glycerol, and presynaptic cannabinoid CB1 receptor. **J. Neurosci.** 26: 4740-4751, 2006

ご注意 : 本商品には 0.1 % 未満のアジ化ナトリウムが入っています。誤って目や口に入ったり、皮膚に付着した場合は大量の水で洗い流してください。