

Anti-GAT-1

(Plasmalemmal GABA transporter-1, Slc6a1)

Code Number : GAT1-Rb-Af700 (rabbit, RRID : AB_2571703)
: GAT1-GP-Af260 (guinea pig, RRID : AB_2571704)

Size : 20 µg and 50 µg / See label on vial
(affinity-purified with antigen polypeptide)

Formulation : Liquid ; 200 µg/ml in PBS with 0.05% NaN₃.

Storage : Store at cool temp. (2-10°C)

The antibody can be stored at 2-10°C. The antibody can be also aliquotted and stored at -80°C for long-term storage. Avoid repeated freeze-thawing. Non-hazardrous. No MSDS required.

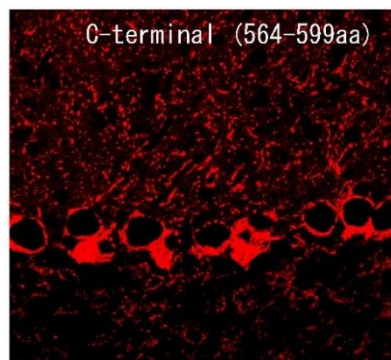
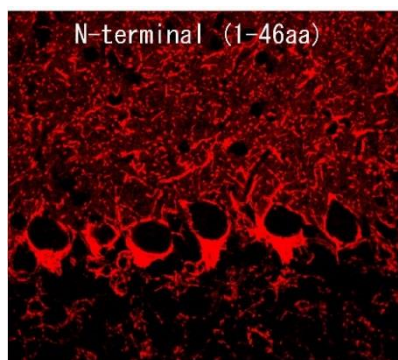
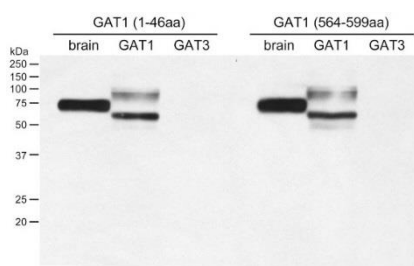
Species : rabbit / guinea pig, polyclonal

Antigen : mouse, 1-46 aa (NM_178703) for GAT1-GP-Af260. 564-599aa for GAT1-Rb-Af700.

Specificity : mouse (others not tested)

Immunoblot detects a protein band at 75 kDa in mouse brains.

Applications : This can be used for immunohistochemistry and immunoblot.



ご注意 : 本商品には 0.1 % 未満のアジ化ナトリウムが入っています。 誤って目や口に入ったり、皮膚に付着した場合は大量の水で洗い流してください。

Research Use : For research use only, not for use in diagnostic procedures.

Remarks : This antibody selectively stains inhibitory synapses.

Reference : 1. Iwakura A, Uchigashima M, Miyazaki T, Yamasaki M, Watanabe M: Lack of molecular-anatomical evidence for GABAergic influence upon axon initial segment of cerebellar Purkinje cells by the pinceau formation. **J. Neurosci.** 32:9438-9448.
2. Uchigashima M, Ohtsuka T, Kobayashi K, Watanabe M. Dopamine synapse is a neuroligin-2-mediated contact between dopaminergic presynaptic and GABAergic postsynaptic structures. **Proc Natl Acad Sci USA**,113:4206-4211, 2016.

ご注意：本商品には 0.1 % 未満のアジ化ナトリウムが入っています。誤って目や口に入ったり、皮膚に付着した場合は大量の水で洗い流してください。

Distributor : NITTOBO MEDICAL CO., LTD
TEL : +81-(0)3-4582-5451
email : nmd-tokuhan@nittobogrp.com

Manufacture : FRONTIER INSTITUTE CO., LTD