

## Anti-GIRK1

(Kir3.1 ; G-protein-coupled inward rectifier potassium channel-1)

### Product Information:

|                |                                                   |
|----------------|---------------------------------------------------|
| 1) Catalog #:  | MSFR101990                                        |
| Item Name:     | GIRK1 pAb (Rb) 20ug                               |
| Size :         | 20µg (affinity-purified with antigen polypeptide) |
| Species :      | Rabbit                                            |
| Product Code : | GIRK1-Rb-Af530                                    |
| RRID :         | AB_2571710                                        |
| 2) Catalog #:  | MSFR102000                                        |
| Item Name:     | GIRK1 pAb (Rb) 50ug                               |
| Size :         | 50µg (affinity-purified with antigen polypeptide) |
| Species :      | Rabbit                                            |
| Product Code : | GIRK1-Rb-Af530                                    |
| RRID :         | AB_2571710                                        |
| 3) Catalog #:  | MSFR102010                                        |
| Item Name:     | GIRK1 pAb (GP) 20ug                               |
| Size :         | 20µg (affinity-purified with antigen polypeptide) |
| Species :      | Guinea pig                                        |
| Product Code : | GIRK1-GP-Af360                                    |
| RRID :         | AB_2571711                                        |
| 4) Catalog #:  | MSFR102020                                        |
| Item Name:     | GIRK1 pAb (GP) 50ug                               |
| Size :         | 50µg (affinity-purified with antigen polypeptide) |
| Species :      | Guinea pig                                        |
| Product Code : | GIRK1-GP-Af360                                    |
| RRID :         | AB_2571711                                        |

**Formulation** : Liquid ; 200 µg/ml in PBS with 0.05% NaN<sub>3</sub>.

**Storage** : Store at cool temp. (2-10°C)

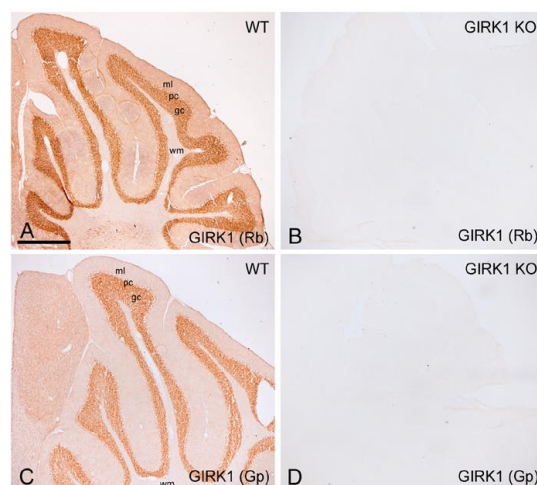
The antibody can be stored at 2-10°C. The antibody can be also aliquoted and stored at -80°C for long-term storage. Avoid repeated freeze-thawing. Non-hazardous. No MSDS required.

**Species** : rabbit / guinea pig, polyclonal

**Antigen** : mouse GIRK1 C-terminal 33 aa  
(469-501aa; DLPPKLQKMAGGPTRMEGNL  
PAKLRKMNSDRFT; D45022)

**Specificity** : mouse (others not tested)

Immunoblot detects ~70 kDa, ~65 kDa and ~55 kDa bands, which appeared to correspond to heavily glycosylated, core-glycosylated, and unglycosylated forms a single protein band at



ご注意 : 本商品には 0.1 % 未満のアジ化ナトリウムが入っています。 誤って目や口に入ったり、皮膚に付着した場合は大量の水で洗い流してください。

44 kDa. All immunohistochemical staining disappear in GIRK1-KO cerebellum.

**Applications** : In general, affinity-purified antibody is used at around 1 microgram/ml for immunoblot and immunohistochemistry. The most appropriate concentration should be determined by users, because it depends on contents in given cells, tissues and organs.

**Research Use** : For research use only, not for use in diagnostic procedures.

**Remarks** :

**Reference** : 1) Aguado C, Colón J, Ciruela F, Schlaudraff F, Cabañero MJ, Perry C, Watanabe M, Liss B, Wickman K, Luján R. Cell type-specific subunit composition of G-protein-gated potassium channels in the cerebellum. J Neurochem. 105:497-511, 2008

2) The above pictures are provided from Dr. Rafael Lujan in Universidad de Castilla-La Mancha, Spain.

ご注意：本商品には 0.1 % 未満のアジ化ナトリウムが入っています。誤って目や口に入ったり、皮膚に付着した場合は大量の水で洗い流してください。

Distributor : NITTOBO MEDICAL CO., LTD  
TEL : +81-(0)3-4582-5451  
email : nmd-tokuhan@nittobogrp.com

Manufacture : FRONTIER INSTITUTE CO., LTD