

## *Anti- GLUT3 (Slc2a3)*

*(Glucose transporter 3)*

### Product Information:

1) Catalog #:	MSFR102870
Item Name:	GLUT3 (Slc2a3) pAb (Rb) 20ug
Size :	20µg (affinity-purified with antigen polypeptide)
Species :	Rabbit
Product Code :	GLUT3-Rb-Af660
RRID :	AB_2571861
2) Catalog #:	MSFR102880
Item Name:	GLUT3 (Slc2a3) pAb (Rb) 50ug
Size :	50µg (affinity-purified with antigen polypeptide)
Species :	Rabbit
Product Code :	GLUT3-Rb-Af660
RRID :	AB_2571861
3) Catalog #:	MSFR102890
Item Name:	GLUT3 (Slc2a3) pAb (GP) 20ug
Size :	20µg (affinity-purified with antigen polypeptide)
Species :	Guinea pig
Product Code :	GLUT3-GP-Af720
RRID :	AB_2571862
4) Catalog #:	MSFR102900
Item Name:	GLUT3 (Slc2a3) pAb (GP) 50ug
Size :	50µg (affinity-purified with antigen polypeptide)
Species :	Guinea pig
Product Code :	GLUT3-GP-Af720
RRID :	AB_2571862

**Formulation** : Liquid ; 200 µg/ml in PBS with 0.05% NaN<sub>3</sub>.

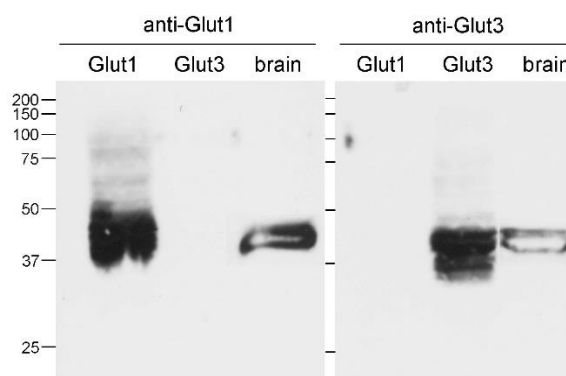
**Storage** : Store at cool temp. (2-10°C)

The antibody can be stored at 2-10°C. The antibody can be also aliquoted and stored at -80°C for long-term storage. Avoid repeated freeze-thawing. Non-hazardous. No MSDS required.

**Species** : rabbit / guinea pig, polyclonal

**Antigen** : mouse Glucose transporter 3,  
C-terminal 35 aa (NM\_011401)

**Specificity** : Immunoblot detects a single protein band at 40 kDa in the brain. Immunohistochemistry detects GLUT3 in specific types of cells in various tissues, such as cells in the subfornical organ and sperm in the testis. No cross-reactivity to



ご注意 : 本商品には 0.1 % 未満のアジ化ナトリウムが入っています。誤って目や口に入ったり、皮膚に付着した場合は大量の水で洗い流してください。

GLUT3 is confirmed in HEK cells transfected with GLUT1 or GLUT3 cDNA.

**Applications** : In general, affinity-purified antibody is used at around 1 microgram/ml for immunoblot and immunohistochemistry. The most appropriate concentration should be determined by users, because it depends on contents in given cells, tissues and organs.

**Research Use** : For research use only, not for use in diagnostic procedures.

**Remarks** :

**Reference** : 1) Kishimoto A, Ishiguro-Oonuma T, Takahashi R, Maekawa M, Toshimori K, Watanabe M, Iwanaga T (2015) Immunohistochemical localization of GLUT3, MCT1, and MCT2 in the testes of mice and rats: the use of different energy sources in spermatogenesis. **Biomed Res.** 36:225-234.

ご注意：本商品には 0.1 % 未満のアジ化ナトリウムが入っています。誤って目や口に入ったり、皮膚に付着した場合は大量の水で洗い流してください。

Distributor : NITTOBO MEDICAL CO., LTD  
TEL : +81-(0)3-4582-5451  
email : nmd-tokuhan@nittobogrp.com

Manufacture : FRONTIER INSTITUTE CO., LTD