

Anti-GluD1-C (GluR δ 1)

(glutamate receptor subunit δ 1)

Product Information:

1)	Catalog #:	MSFR102460
	Item Name:	GluD1-C (GluR δ 1) pAb (Rb) 20ug
	Size :	20 μ g (affinity-purified with antigen polypeptide)
	Species :	Rabbit
	Product Code :	GluD1C-Rb-Af1390
	RRID :	AB_2571757
2)	Catalog #:	MSFR102470
	Item Name:	GluD1-C (GluR δ 1) pAb (Rb) 50ug
	Size :	50 μ g (affinity-purified with antigen polypeptide)
	Species :	Rabbit
	Product Code :	GluD1C-Rb-Af1390
	RRID :	AB_2571757
3)	Catalog #:	MSFR102480
	Item Name:	GluD1-C (GluR δ 1) pAb (Go) 20ug
	Size :	20 μ g (affinity-purified with antigen polypeptide)
	Species :	Goat
	Product Code :	GluD1C-Go-Af840
	RRID :	AB_2571758
4)	Catalog #:	MSFR102490
	Item Name:	GluD1-C (GluR δ 1) pAb (Go) 50ug
	Size :	50 μ g (affinity-purified with antigen polypeptide)
	Species :	Goat
	Product Code :	GluD1C-Go-Af840
	RRID :	AB_2571758
5)	Catalog #:	MSFR102500
	Item Name:	GluD1-C (GluR δ 1) pAb (GP) 20ug
	Size :	20 μ g (affinity-purified with antigen polypeptide)
	Species :	Guinea pig
	Product Code :	GluD1C-GP-Af860
	RRID :	AB_2571759
6)	Catalog #:	MSFR102510
	Item Name:	GluD1-C (GluR δ 1) pAb (GP) 50ug
	Size :	50 μ g (affinity-purified with antigen polypeptide)
	Species :	Guinea pig
	Product Code :	GluD1C-GP-Af860
	RRID :	AB_2571759

Formulation : Liquid ; 200 μ g/ml in PBS with 0.05% NaN₃.

Storage : Store at cool temp. (2-10°C)

The antibody can be stored at 2-10°C. The antibody can be also aliquoted and stored at -80°C for long-term storage. Avoid repeated freeze-thawing. Non-hazardous. No MSDS required.

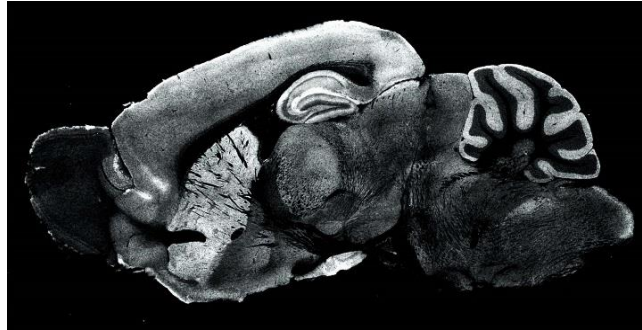
Species : rabbit / goat / guinea pig, polyclonal

ご注意 : 本商品には 0.1 % 未満のアジ化ナトリウムが入っています。誤って目や口に入ったり、皮膚に付着した場合は大量の水で洗い流してください。

Antigen : mouse GluD1 (NM_008166), C-terminal 895-932 aa, intracellular epitope,

Specificity : moue (others not tested)

The specificity has been verified by knockout mouse brains, and has no cross reactivity to GluD2 (see a reference of Konno et al., 2014).



Applications : In general, affinity-purified antibody is used at around 1 microgram/ml for immunoblot and immunohistochemistry. The most appropriate concentration should be determined by users, because it depends on contents in given cells, tissues and organs.

Research Use : For research use only, not for use in diagnostic procedures.

Remarks : For immunohistochemistry for neuronal iGluRs, users should adopt postembedding immunogold for electron microscopic detection and protease predigestion or fresh frozen sections for light microscopic detection (see the below reference).

Reference : 1) Konno K, Matsuda K, Nakamoto C, Uchigashima M, Miyazaki T, Yamasaki M, Sakimura K, Yuzaki M, Watanabe M: Enriched expression of GluD1 in higher brain regions and its involvement in parallel fiber-interneuron synapse formation in the cerebellum. **J. Neurosci**, 34:7412-7424, 2014.

ご注意 : 本商品には 0.1 % 未満のアジ化ナトリウムが入っています。 誤って目や口に入ったり、皮膚に付着した場合は大量の水で洗い流してください。