

Anti-GluN2C (GluR ϵ 3, NR2C)

(NMDA-type glutamate receptor subunit 2C)

Product Information:

1) Catalog #:	MSFR102800
Item Name:	GluN2C (NR2C) pAb (Rb) 20ug
Size :	20 μ g (affinity-purified with antigen polypeptide)
Species :	Rabbit
Product Code :	GluRe3C-Rb-Af270
RRID :	AB_2571763
2) Catalog #:	MSFR102810
Item Name:	GluN2C (NR2C) pAb (Rb) 50ug
Size :	50 μ g (affinity-purified with antigen polypeptide)
Species :	Rabbit
Product Code :	GluRe3C-Rb-Af270
RRID :	AB_2571763
3) Catalog #:	MSFR107450
Item Name:	GluN2C (NR2C) pAb (Rb) 20ug
Size :	20 μ g (affinity-purified with antigen polypeptide)
Species :	Rabbit
Product Code :	GluRe3C-Rb-Af720
RRID :	AB_2864356
4) Catalog #:	MSFR107460
Item Name:	GluN2C (NR2C) pAb (Rb) 50ug
Size :	50 μ g (affinity-purified with antigen polypeptide)
Species :	Rabbit
Product Code :	GluRe3C-Rb-Af720
RRID :	AB_2864356

Formulation : Liquid ; 200 μ g/ml (rabbit) and 81 μ g/ml (guinea pig) in PBS with 0.05% NaN₃.

Storage : Store at cool temp. (2-10°C)

The antibody can be stored at 2-10°C. The antibody can be also aliquoted and stored at -80°C for long-term storage. Avoid repeated freeze-thawing. Non-hazardous. No MSDS required.

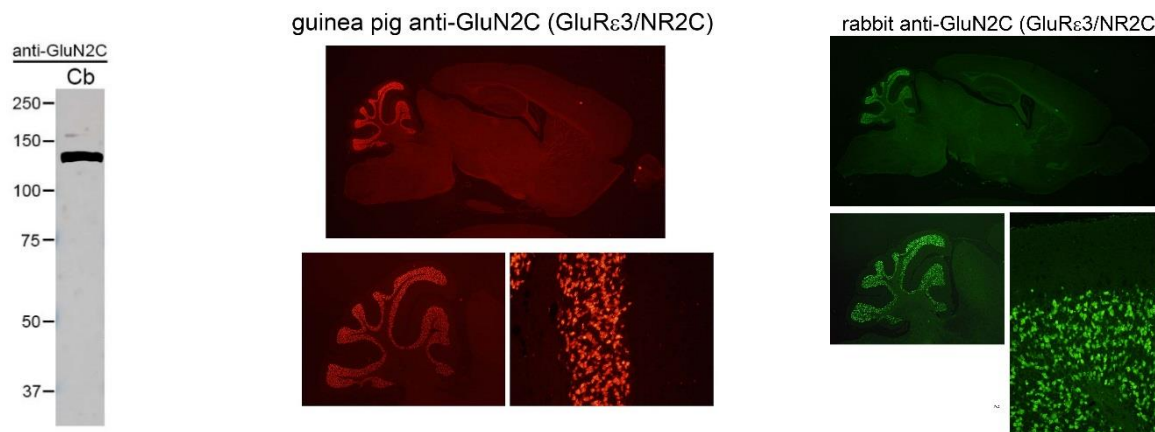
Species : rabbit / guinea pig, polyclonal

Antigen : mouse GluN2C, C-terminal 908-927 aa (D10694) DVSGSLDRATRTIENWGNNR

ご注意 : 本商品には 0.1 % 未満のアジ化ナトリウムが入っています。誤って目や口に入ったり、皮膚に付着した場合は大量の水で洗い流してください。

Specificity : mouse (others not tested)

Immunoblot detects a single protein band at 140 kDa, with no cross reactivity to other iGluR subunits. Guinea pig GluN2C antibody yields intense immunohistochemical labeling than rabbit one, while rabbit GluN2C antibody yields intense immunoblot labeling than guinea pig one, See the reference for immunoblot and immunohistochemistry.



Applications : In general, affinity-purified antibody is used at around 1 microgram/ml for immunoblot and immunohistochemistry. The most appropriate concentration should be determined by users, because it depends on contents in given cells, tissues and organs.

Research Use : For research use only, not for use in diagnostic procedures.

Remarks : For immunohistochemistry for neuronal iGluRs, users should adopt postembedding immunogold for electron microscopic detection and protease predigestion for light microscopic detection (see the below reference).

Reference : Yamada, K., Fukaya, M., Shimizu, H., Sakimura, K., Watanabe, M. (2001) NMDA receptor subunits GluRε1, GluRε3, and GluRζ1 are enriched at the mossy fiber-granule cell synapse in the adult mouse cerebellum. *Eur. J. Neurosci.*13:2025-2036.

ご注意 : 本商品には 0.1 % 未満のアジ化ナトリウムが入っています。誤って目や口に入ったり、皮膚に付着した場合は大量の水で洗い流してください。

Distributor : NITTOBO MEDICAL CO., LTD
TEL : +81-(0)3-4582-5451
email : nmd-tokuhan@nittobogrp.com

Manufacture : FRONTIER INSTITUTE CO., LTD