

***Anti-KCC2***  
(type-2 K<sup>+</sup>-Cl<sup>-</sup> cotransporter)

**Product Information:**

---

- 1) **Catalog #:** MSFR103440  
**Item Name:** KCC2 (931-971) pAb (Rb) 20ug  
**Size :** 20µg (affinity-purified with antigen polypeptide)  
**Species :** Rabbit  
**Product Code :** KCC2-Rb-Af720  
**RRID :** AB\_2571782
- 2) **Catalog #:** MSFR103450  
**Item Name:** KCC2 (931-971) pAb (Rb) 50ug  
**Size :** 50µg (affinity-purified with antigen polypeptide)  
**Species :** Rabbit  
**Product Code :** KCC2-Rb-Af720  
**RRID :** AB\_2571782
- 3) **Catalog #:** MSFR103460  
**Item Name:** KCC2 (1011-1042) pAb (Rb) 20ug  
**Size :** 20µg (affinity-purified with antigen polypeptide)  
**Species :** Rabbit  
**Product Code :** KCC2-Rb-Af300  
**RRID :** AB\_2571783
- 4) **Catalog #:** MSFR103470  
**Item Name:** KCC2 (1011-1042) pAb (Rb) 50ug  
**Size :** 50µg (affinity-purified with antigen polypeptide)  
**Species :** Rabbit  
**Product Code :** KCC2-Rb-Af300  
**RRID :** AB\_2571783
- 5) **Catalog #:** MSFR103480  
**Item Name:** KCC2 (931-971) pAb (Go) 20ug  
**Size :** 20µg (affinity-purified with antigen polypeptide)  
**Species :** Goat  
**Product Code :** KCC2-Go-Af1060  
**RRID :** AB\_2571784
- 6) **Catalog #:** MSFR103490  
**Item Name:** KCC2 (931-971) pAb (Go) 50ug  
**Size :** 50µg (affinity-purified with antigen polypeptide)  
**Species :** Goat  
**Product Code :** KCC2-Go-Af1060  
**RRID :** AB\_2571784
- 7) **Catalog #:** MSFR103500  
**Item Name:** KCC2 (1011-1042) pAb (Go) 20ug  
**Size :** 20µg (affinity-purified with antigen polypeptide)  
**Species :** Goat  
**Product Code :** KCC2-Go-Af1300  
**RRID :** AB\_2571785
- 8) **Catalog #:** MSFR103510  
**Item Name:** KCC2 (1011-1042) pAb (Go) 50ug  
**Size :** 50µg (affinity-purified with antigen polypeptide)  
**Species :** Goat  
**Product Code :** KCC2-Go-Af1300  
**RRID :** AB\_2571785
- 9) **Catalog #:** MSFR103520

ご注意：本商品には 0.1 % 未満のアジ化ナトリウムが入っています。誤って目や口に入ったり、皮膚に付着した場合は大量の水で洗い流してください。

<b>Item Name:</b>	KCC2 pAb (GP) 20ug
<b>Size :</b>	20µg (affinity-purified with antigen polypeptide)
<b>Species :</b>	Guinea pig
<b>Product Code :</b>	KCC2-GP-Af370
<b>RRID :</b>	AB_2571786
<b>10) Catalog #:</b>	MSFR103530
<b>Item Name:</b>	KCC2 pAb (GP) 50ug
<b>Size :</b>	50µg (affinity-purified with antigen polypeptide)
<b>Species :</b>	Guinea pig
<b>Product Code :</b>	KCC2-GP-Af370
<b>RRID :</b>	AB_2571786

**Formulation :** Liquid ; 200 µg/ml in PBS with 0.05% NaN<sub>3</sub>.

**Storage :** Store at cool temp. (2-10°C)

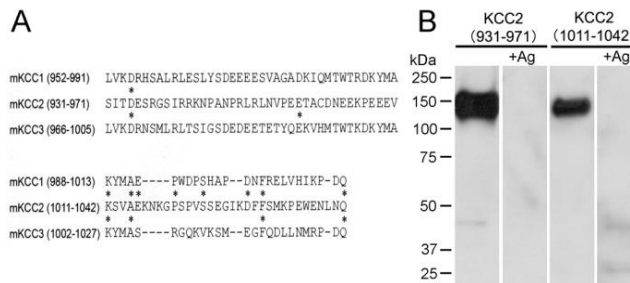
The antibody can be stored at 2-10°C. The antibody can be also aliquoted and stored at -80°C for long-term storage. Avoid repeated freeze-thawing. Non-hazardous. No MSDS required.

**Species :** rabbit / guinea pig / goat, polyclonal

**Antigen :** mouse KCC2, C-terminal 931-971aa and 1011-1042 aa (NM\_020333)

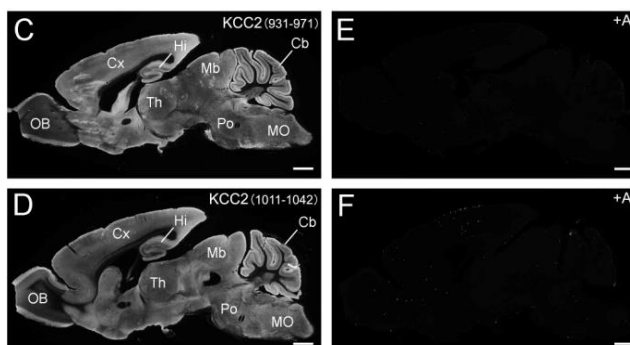
**Specificity :** mouse (others not tested) Immunoblot detects a single protein band at 130-140 kDa. Immunolabeling by immuno-histochemistry and immunoblot disappears by preabsorption of KCC2 antibodies with the corresponding antigens.

**Applications :** In general, affinity-purified antibody is used at around 1 microgram/ml for immunoblot and immunohistochemistry. The most appropriate concentration should be determined by users, because it depends on contents in given cells, tissues and organs.



**Research Use :** For research use only, not for use in diagnostic procedures.

**Remarks :**



**Reference :** 1) Kawakita I, Uchigashima M, Konno K, Miyazaki T, Yamasaki M, Watanabe M: KCC2 is preferentially recruited to climbing fiber synapse during development and stellate cell-targeting dendritic zone at adulthood in cerebellar Purkinje cells. **Eur. J. Neurosci.**, 37: 532-543, 2012.

ご注意：本商品には 0.1 % 未満のアジ化ナトリウムが入っています。誤って目や口に入ったり、皮膚に付着した場合は大量の水で洗い流してください。