

Anti-MCT1

(monocarboxylate transporter-1 or Slc16a1)

Code Number : MCT1-Rb-Af900 (rabbit, RRID : AB_2571794)

: MCT1-GP-Af950 (guinea pig, RRID : AB_2571795)

Size : 20 µg and 50 µg / See label on vial
(affinity-purified with antigen polypeptide)

Formulation : Liquid ; 200 µg/ml in PBS with 0.05% NaN₃.

Storage : Store at cool temp. (2-10°C)

The antibody can be stored at 2-10°C.

The antibody can be also aliquotted and stored at -80°C for long-term storage. Avoid repeated freeze-thawing.

Non-hazardrous. No MSDS required.

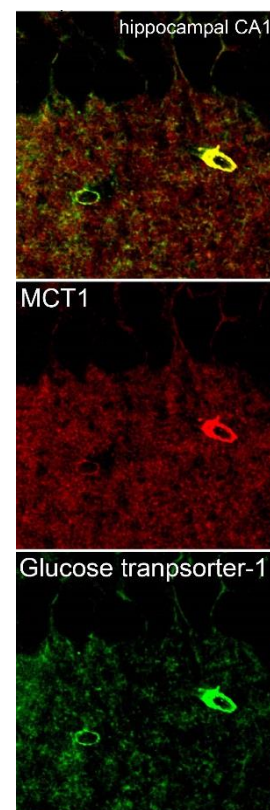
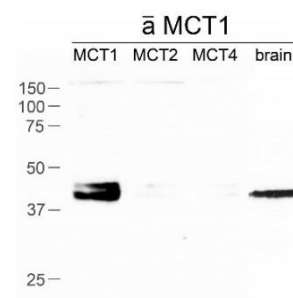
Species : rabbit, polyclonal 469-493aa
(NM_009196)

Specificity : mouse (others not tested)

The specificity of MCT1 antibody was confirmed by selective detection of 40kDa band in HEK293T lysates transfected with MCT1, but not MCT2 or MCT4 and in brain homogenates. In immunohistochemistry, MCT1 is detected in a cell-type dependent manner, for example, capillary in the brain and spermatogonia in the testis. MCT1 is well overlapped with glucose transporter-1 in the adult brain.

Applications : In general, affinity-purified antibody is used at around 1 microgram/ml for immunoblot and immunohistochemistry.

The most appropriate concentration should be determined by users, because it depends on contents in given cells, tissues and organs.



ご注意 : 本商品には 0.1 % 未満のアジ化ナトリウムが入っています。 誤って目や口に入ったり、皮膚に付着した場合は大量の水で洗い流してください。

Research Use : For research use only, not for use in diagnostic procedures.

Remarks :

Reference : 1) Kaji I, Iwanaga T, Watanabe M, Guth P, Engel E, Kaunitz J, Akiba Y: SCFA transport in rat duodenum. **Am J Physiol Gastrointest Liver Physiol**, 308:G188-197, 2015.

ご注意：本商品には 0.1 % 未満のアジ化ナトリウムが入っています。誤って目や口に入ったり、皮膚に付着した場合は大量の水で洗い流してください。

Distributor : NITTOBO MEDICAL CO., LTD
TEL : +81-(0)3-4582-5451
email : nmd-tokuhan@nittobogrp.com

Manufacture : FRONTIER INSTITUTE CO., LTD