

## ***Anti-MT 1/2***

*(Metallothionein I / II)*

**Code Number:** MT-1/2-RB-AF1218

**Size:** 20  $\mu$  g or 50  $\mu$  g (Affinity purified)

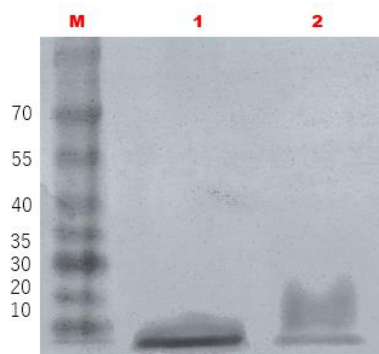
**Formulation:** Liquid (50% Glycerol/PBS);

**Storage:** Store at 4 °C. The antibody can be stored at 4 °C. The antibody can be also aliquotted and stored at -80 °C for long-term storage. Avoid repeated freeze-thawing. Non-hazardous. No MSDS required.

**Species:** rabbit, polyclonal

**Antigen:** rat metallothionein

**Specificity:** Mouse/Human/Rat



**M:** Prestained Ladder

**1:** MT2/APO(TPEN+) 2  $\mu$  g/lane

**2:** MT2/Zn(TPEN+) 2  $\mu$  g/lane

**Applications:** In general, protein purified antibody is used at working dilution of 1:500-1:1000 for immunohistochemistry. The most appropriate concentration should be determined by users, because it depends on contents in given cells, tissues and organs.

This antibody is used at working dilution of 1:500-1:1000 for western blotting. Western blot analysis of MT-II. 2  $\mu$  g of MT-II proteins (strong recommend chelating by TPEN: N,N,N',N'-Tetrakis(2-pyridylmethyl)ethylenediamine) were electrophoresed on 5-20% gradient gel SDS-PAGE, transferred to PVDF and then immunostained with this antibody.

ご注意：本商品には 50 % の Glycerol が入っています。誤って目や口に入ったり、皮膚に付着した場合は大量の水で洗い流してください。

Distributor : NITTOBO MEDICAL CO., LTD  
TEL : +81-(0)3-4582-5451  
email : nmd-tokuhan@nittobogrp.com

Manufacture : FRONTIER INSTITUTE CO., LTD

**Research Use:** For research use only, not for use in diagnostic procedures.

**Remarks:**

**Reference:** 1) Nakazato K, Nakajima K, Nakano T, Kodaira T, Nakayama K, Satoh M, Nagamine T. (2012) Metallothionein (MT) 1/2 expression in MT 1/2 and MT 3 knock-out mice and Long-Evans Cinnamon (LEC) rats. **J Toxicol Sci.** 2012 Feb;37(1):169-75.

ご注意：本商品には 50 % の Glycerol が入っています。誤って目や口に入ったり、皮膚に付着した場合は大量の水で洗い流してください。

Distributor : NITTOBO MEDICAL CO., LTD  
TEL : +81-(0)3-4582-5451  
email : nmd-tokuhan@nittobogrp.com

Manufacture : FRONTIER INSTITUTE CO., LTD