

Anti-PKCβII

(protein kinase CβII)

Product Information:

1) Catalog #:	MSFR104790
Item Name:	PKCβII pAb (Rb) 20ug
Size :	20μg (affinity-purified with antigen polypeptide)
Species :	Rabbit
Product Code :	PKCβII-Rb-Af330
RRID :	AB_2571822
2) Catalog #:	MSFR104800
Item Name:	PKCβII pAb (Rb) 50ug
Size :	50μg (affinity-purified with antigen polypeptide)
Species :	Rabbit
Product Code :	PKCβII-Rb-Af330
RRID :	AB_2571822
3) Catalog #:	MSFR104810
Item Name:	PKCβII pAb (GP) 20ug
Size :	20μg (affinity-purified with antigen polypeptide)
Species :	Guinea pig
Product Code :	PKCβII-GP-Af1080
RRID :	AB_2571823
4) Catalog #:	MSFR104820
Item Name:	PKCβII pAb (GP) 50ug
Size :	50μg (affinity-purified with antigen polypeptide)
Species :	Guinea pig
Product Code :	PKCβII-GP-Af1080
RRID :	AB_2571823

Formulation : Liquid ; 200 μg/ml in PBS with 0.05% NaN₃.
(affinity-purified with antigen polypeptide)

Storage : Store at cool temp (2-10°C).

The antibody can be stored at 2-10°C. The antibody can be also aliquoted and stored at -80°C for long-term storage. Avoid repeated freeze-thawing. Non-hazardous. No MSDS required.

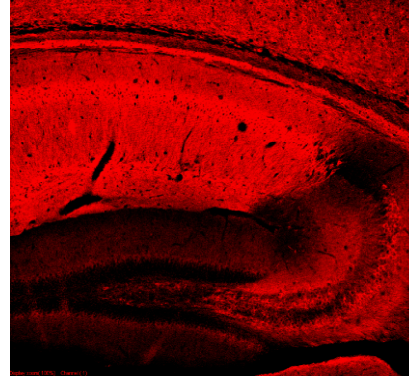
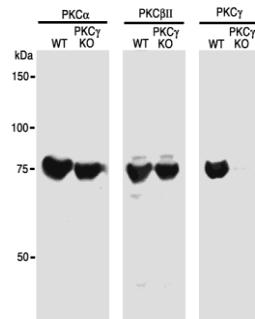
Species : rabbit / guinea pig, polyclonal

Antigen : mouse PKCβII, 657-673 aa (M008855)

ご注意 : 本商品には 0.1 % 未満のアジ化ナトリウムが入っています。誤って目や口に入ったり、皮膚に付着した場合は大量の水で洗い流してください。

Specificity : mouse (others not tested)

Immunoblot detects a single band at 75 kDa.



Applications : In general, affinity-purified antibody is used at around 1 microgram/ml for immunoblot and immunohistochemistry. The most appropriate concentration should be determined by users, because it depends on contents in given cells, tissues and organs.

Research Use : For research use only, not for use in diagnostic procedures.

Remarks : Guinea pig PKC β II antibody is higher in titer than rabbit one.

Reference :

ご注意：本商品には 0.1 % 未満のアジ化ナトリウムが入っています。誤って目や口に入ったり、皮膚に付着した場合は大量の水で洗い流してください。

Distributor : NITTOBO MEDICAL CO., LTD
TEL : +81-(0)3-4582-5451
email : nmd-tokuhan@nittobogrp.com

Manufacture : FRONTIER INSTITUTE CO., LTD