

## *Anti-PKC $\gamma$*

(protein kinase C $\gamma$ )

### Product Information:

---

- |    |                       |   |
|----|-----------------------|---|
| 1) | <b>Catalog #:</b>     | MSFR104840  |
|    | <b>Item Name:</b>     | PKC $\gamma$ pAb (Rb) 20ug                              |
|    | <b>Size :</b>         | 20 $\mu$ g (affinity-purified with antigen polypeptide) |
|    | <b>Species :</b>      | Rabbit  |
|    | <b>Product Code :</b> | PKCg-Rb-Af400   |
|    | <b>RRID :</b>         | AB_2571824  |
| 2) | <b>Catalog #:</b>     | MSFR104850  |
|    | <b>Item Name:</b>     | PKC $\gamma$ pAb (Rb) 50ug                              |
|    | <b>Size :</b>         | 50 $\mu$ g (affinity-purified with antigen polypeptide) |
|    | <b>Species :</b>      | Rabbit  |
|    | <b>Product Code :</b> | PKCg-Rb-Af400   |
|    | <b>RRID :</b>         | AB_2571824  |
| 3) | <b>Catalog #:</b>     | MSFR104860  |
|    | <b>Item Name:</b>     | PKC $\gamma$ pAb (Go) 20ug                              |
|    | <b>Size :</b>         | 20 $\mu$ g (affinity-purified with antigen polypeptide) |
|    | <b>Species :</b>      | Goat  |
|    | <b>Product Code :</b> | PKCg-Go-Af840   |
|    | <b>RRID :</b>         | AB_2571825  |
| 4) | <b>Catalog #:</b>     | MSFR104870  |
|    | <b>Item Name:</b>     | PKC $\gamma$ pAb (Go) 50ug                              |
|    | <b>Size :</b>         | 50 $\mu$ g (affinity-purified with antigen polypeptide) |
|    | <b>Species :</b>      | Goat  |
|    | <b>Product Code :</b> | PKCg-Go-Af840   |
|    | <b>RRID :</b>         | AB_2571825  |
| 5) | <b>Catalog #:</b>     | MSFR104880  |
|    | <b>Item Name:</b>     | PKC $\gamma$ pAb (GP) 20ug                              |
|    | <b>Size :</b>         | 20 $\mu$ g (affinity-purified with antigen polypeptide) |
|    | <b>Species :</b>      | Guinea pig  |
|    | <b>Product Code :</b> | PKCg-GP-Af350   |
|    | <b>RRID :</b>         | AB_2571826  |
| 6) | <b>Catalog #:</b>     | MSFR104890  |
|    | <b>Item Name:</b>     | PKC $\gamma$ pAb (GP) 50ug                              |
|    | <b>Size :</b>         | 50 $\mu$ g (affinity-purified with antigen polypeptide) |
|    | <b>Species :</b>      | Guinea pig  |
|    | <b>Product Code :</b> | PKCg-GP-Af350   |
|    | <b>RRID :</b>         | AB_2571826  |
- 

**Formulation** : Liquid ; 200  $\mu$ g/ml in PBS with 0.05% NaN<sub>3</sub>.

**Storage** : Store at cool temp (2-10°C).

The antibody can be stored at 2-10°C. The antibody can be also aliquoted and stored at -80°C for long-term storage. Avoid repeated freeze-thawing. Non-hazardous. No MSDS required.

**Species** : rabbit / guinea pig / goat, polyclonal

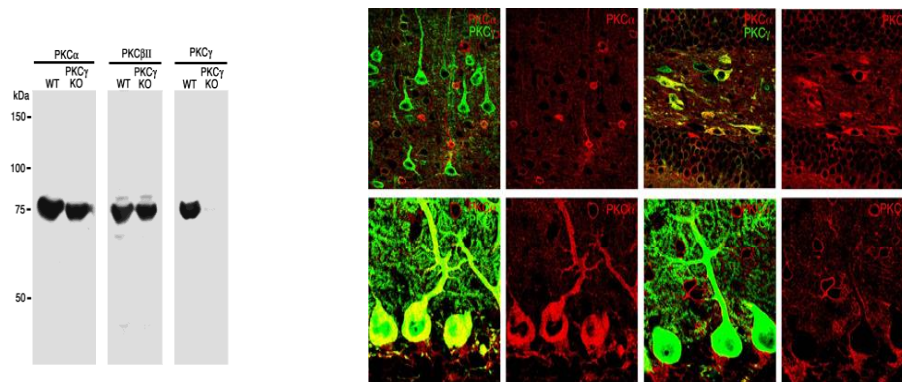
ご注意 : 本商品には 0.1 % 未満のアジ化ナトリウムが入っています。誤って目や口に入ったり、皮膚に付着した場合は大量の水で洗い流してください。

**Antigen** : mouse PKC $\gamma$ , 684-697 aa (L28035)

**Specificity** : mouse (others not tested)

Immunoblot detects a single band at 75 kDa.

**Applications** : In general, affinity-purified antibody is used at around 1 microgram/ml for immunoblot and immunohistochemistry. The most appropriate concentration should be determined by users, because it depends on contents in given cells, tissues and organs.



**Research Use** : For research use only, not for use in diagnostic procedures.

**Remarks** : Rabbit, guinea pig, and goat PKC $\gamma$  antibodies are equal in specificity and titer.

**Reference** : 1) Yoshida, T., Fukaya, M., Uchigashima, M., Kamiya, H., Kano, M., Watanabe, M. (2006) Localization of diacylglycerol lipase- $\alpha$  around postsynaptic spine suggests close proximity between production site of an endocannabinoid, 2-arachidonoyl-glycerol, and presynaptic cannabinoid CB1 receptor. **J. Neurosci.** 26: 4740-4751.

2) Nomura S, Fukaya M, Tsujioka T, Wu D, Watanabe M: Phospholipase Cb3 is distributed in both somatodendritic and axonal compartments and localized around perisynapse and smooth endoplasmic reticulum in mouse Purkinje cell subsets. **Eur. J. Neurosci**, in press

ご注意 : 本商品には 0.1 % 未満のアジ化ナトリウムが入っています。 誤って目や口に入ったり、皮膚に付着した場合は大量の水で洗い流してください。