

Anti-PSD-95

Product Information:

1)	Catalog #:	MSFR105180
	Item Name:	PSD95 pAb (GP) 20ug
	Size :	20µg (affinity-purified with antigen polypeptide)
	Species :	Guinea pig
	Product Code :	PSD95-GP-Af660
	RRID :	AB_2571612
2)	Catalog #:	MSFR105190
	Item Name:	PSD95 pAb (GP) 50ug
	Size :	50µg (affinity-purified with antigen polypeptide)
	Species :	Guinea pig
	Product Code :	PSD95-GP-Af660
	RRID :	AB_2571612
3)	Catalog #:	MSFR106760
	Item Name:	PSD95 pAb (Rb) 20ug
	Size :	20µg (affinity-purified with antigen polypeptide)
	Species :	Rabbit
	Product Code :	PSD95-Rb-Af1720
	RRID :	AB_2571611
4)	Catalog #:	MSFR106770
	Item Name:	PSD95 pAb (Rb) 50ug
	Size :	50µg (affinity-purified with antigen polypeptide)
	Species :	Rabbit
	Product Code :	PSD95-Rb-Af1720
	RRID :	AB_2571611
5)	Catalog #:	MSFR107510
	Item Name:	PSD95 pAb (Go) 20ug
	Size :	20µg (affinity-purified with antigen polypeptide)
	Species :	Goat
	Product Code :	PSD95-Go-Af1190
	RRID :	AB_2920798
6)	Catalog #:	MSFR107520
	Item Name:	PSD95 pAb (Go) 50ug
	Size :	50µg (affinity-purified with antigen polypeptide)
	Species :	Goat
	Product Code :	PSD95-Go-Af1190
	RRID :	AB_2920798

Formulation : Liquid ; 200 µg/ml in PBS with 0.05% NaN₃.

Storage : Store at cool temp (2-10°C).

The antibody can be stored at 2-10°C. The antibody can be also aliquoted and stored at -80°C for long-term storage. Avoid repeated freeze-thawing. Non-hazardous. No MSDS required.

Species : rabbit / guinea pig, polyclonal

Antigen : mouse PSD-95, 1-64 aa (D50621)

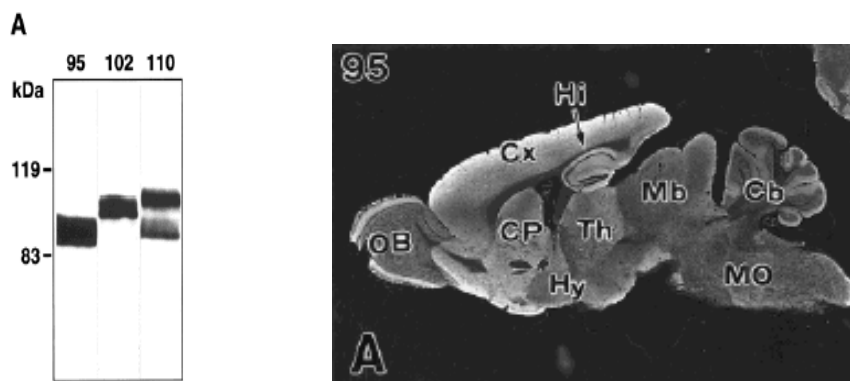
ご注意：本商品には 0.1 % 未満のアジ化ナトリウムが入っています。誤って目や口に入ったり、皮膚に付着した場合は大量の水で洗い流してください。

Specificity : mouse (others not tested)

Immunoblot detects a single protein band at 87-97 kDa in adult mouse brain homogenates.

See the below reference for immunoblot and immunohistochemistry.

Applications : In general, affinity-purified antibody is used at around 1 microgram/ml for immunoblot and immunohistochemistry. The most appropriate concentration should be determined by users, because it depends on contents in given cells, tissues and organs.



Remarks : rabbit and guinea pig antibodies are similar in titer and specificity. In use for immunohistochemistry, users should adopt postembedding immunogold for electron microscopic detection and protease predigestion for light microscopic detection (see the below reference).

Research Use : For research use only, not for use in diagnostic procedures.

Reference : 1) Fukaya, M., Watanabe, M. (2000) Improved immunohistochemical detection of postsynaptically-located PSD-95/SAP90 protein family by protease section pretreatment. A study in the adult mouse brain. *J. Comp. Neurol.* 426:572-586.

ご注意：本商品には 0.1 % 未満のアジ化ナトリウムが入っています。誤って目や口に入ったり、皮膚に付着した場合は大量の水で洗い流してください。