

# Anti-RyR1

(ryanodine receptor 1, skeletal type)

**Code Number** : RyR1-Rb-Af660 (rabbit, RRID : )

**Size** : 20 µg and 50 µg / See label on vial  
 (affinity-purified with antigen polypeptide)

**Formulation** : Liquid ; 200 µg/ml in PBS with 0.05% NaN<sub>3</sub>.

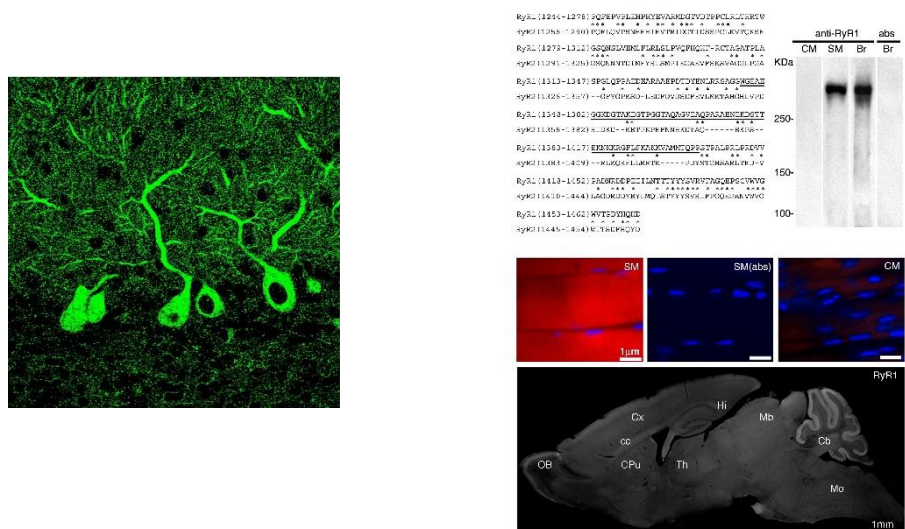
**Storage** : Store at cool temp (2-10°C).  
 The antibody can be stored at 2-10°C. The antibody can be also aliquotted and stored at -80°C for long-term storage. Avoid repeated freeze-thawing. Non-hazardrous. No MSDS required.

**Species** : rabbit, polyclonal

**Antigen** : mouse, 1343-1404 aa (AY268935)

**Specificity** : mouse (others not tested)

This antibody stains skeletal, but not cardiac, muscle. In the brain, immunohistochemical labeling is particularly intense in the cerebellar cortex, where aggregated puncta are crowded in Purkinje cell perikarya and dendrites.



ご注意 : 本商品には 0.1 % 未満のアジ化ナトリウムが入っています。 誤って目や口に入ったり、皮膚に付着した場合は大量の水で洗い流してください。

**Applications** : In general, affinity-purified antibody is used at around 1 microgram/ml for immunoblot and immunohistochemistry. The most appropriate concentration should be determined by users, because it depends on contents in given cells, tissues and organs.

**Research Use** : For research use only, not for use in diagnostic procedures.

**Remarks** :

**Reference** : 1. Kakizawa, S. Kishimoto, Y., Hashimoto, K., Miyazaki, T. Furutani, K., Shimizu H, Fukaya M, Nishi, M., Sakagami, H., Ikeda A, Kondo, H., Kano, M., Watanabe, M., Iino, M., Takeshima, H. (2007) Junctophilin-mediated channel crosstalk essential for cerebellar synaptic plasticity. **EMBO J.** 26:1924-1933.

ご注意 : 本商品には 0.1 % 未満のアジ化ナトリウムが入っています。誤って目や口に入ったり、皮膚に付着した場合は大量の水で洗い流してください。

Distributor : [NITTOBO MEDICAL CO., LTD](http://www.nittobomedical.co.jp)  
TEL : +81-(0)3-4582-5451  
email : nmd-tokuhan@nittobogrp.com

Manufacture : FRONTIER INSTITUTE CO., LTD