

## *Anti-TPH2*

*(tryptophan hydroxylase 2)*

**Code Number** : TPH2-Rb-Af250 (rabbit, RRID : AB\_2665531)

: TPH2-GP-Af900 (guinea pig, RRID : AB\_2665532)

**Size** : 20 µg and 50 µg / See label on vial  
(affinity-purified with antigen polypeptide)

**Formulation** : Liquid ; 200 µg/ml in PBS with 0.05% NaN<sub>3</sub>.

**Storage** : Store at cool temp (2-10°C).

The antibody can be stored at 2-10°C. The antibody can be also aliquotted and stored at -80°C for long-term storage. Avoid repeated freeze-thawing. Non-hazardrous. No MSDS required.

**Species** : rabbit / guinea pig, polyclonal

**Antigen** : mouse TPH2, (NCBI NM\_173391)

41-61 aa (TPH2-GP-Af900), 466-488 aa (TPH2-Rb-Af250)

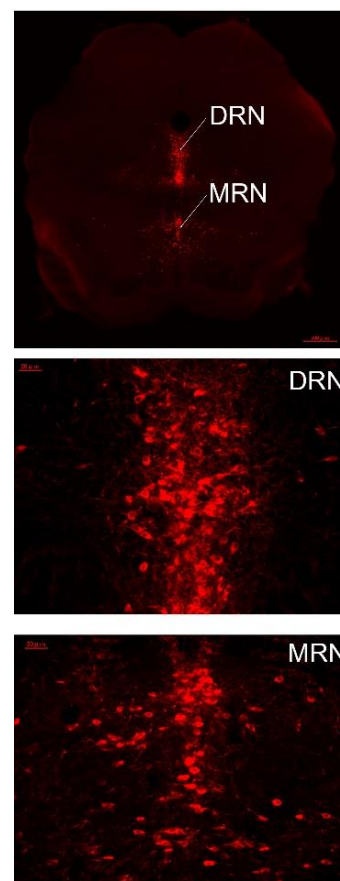
**Specificity** : This selectively stains serotonergic neurons in the raphe nuclei, including the median and dorsal raphe nuclei in the midbrain.

**Applications** : In general, affinity-purified antibody is used at around 1 microgram/ml for immunoblot and immunohistochemistry. The most appropriate concentration should be determined by users, because it depends on contents in given cells, tissues and organs.

**Research Use** : For research use only, not for use in diagnostic procedures.

**Remarks** :

**Reference** :



ご注意：本商品には 0.1 % 未満のアジ化ナトリウムが入っています。誤って目や口に入ったり、皮膚に付着した場合は大量の水で洗い流してください。

Distributor : NITTOBO MEDICAL CO., LTD  
TEL : +81-(0)3-4582-5451  
email : nmd-tokuhan@nittobogrp.com

Manufacture : FRONTIER INSTITUTE CO., LTD