

Anti-VDCC α 1G (Cav3.1)

Product Information:

1)	Catalog #:	MSFR106060
	Item Name:	VDCCa1G (Cav3.1) pAb (Rb) 20ug
	Size :	20 μ g (affinity-purified with antigen polypeptide)
	Species :	Rabbit
	Product Code :	VDCCa1G-Rb-Af810
	RRID :	AB_2571852
2)	Catalog #:	MSFR106070
	Item Name:	VDCCa1G (Cav3.1) pAb (Rb) 50ug
	Size :	50 μ g (affinity-purified with antigen polypeptide)
	Species :	Rabbit
	Product Code :	VDCCa1G-Rb-Af810
	RRID :	AB_2571852
3)	Catalog #:	MSFR106080
	Item Name:	VDCCa1G (Cav3.1) pAb (GP) 20ug
	Size :	20 μ g (affinity-purified with antigen polypeptide)
	Species :	Guinea pig
	Product Code :	VDCCa1G-GP-Af320
	RRID :	AB_2571853
4)	Catalog #:	MSFR106090
	Item Name:	VDCCa1G (Cav3.1) pAb (GP) 50ug
	Size :	50 μ g (affinity-purified with antigen polypeptide)
	Species :	Guinea pig
	Product Code :	VDCCa1G-GP-Af320
	RRID :	AB_2571853

Formulation : Liquid ; 200 μ g/ml in PBS with 0.05% NaN₃.

Storage : Store at cool temp (2-10°C).

The antibody can be stored at 2-10°C. The antibody can be also aliquoted and stored at -80°C for long-term storage. Avoid repeated freeze-thawing. Non-hazardous. No MSDS required.

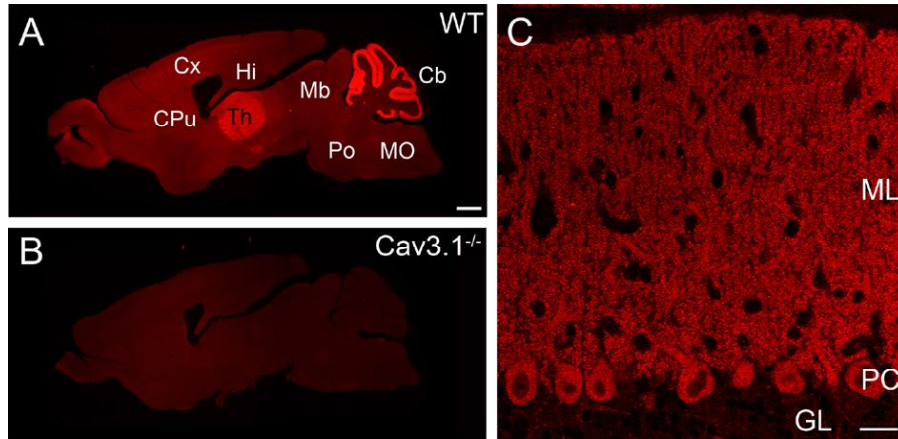
Species : guinea pig / rabbit, polyclonal

Antigen : mouse VDCCa1G (CPKKDALSLSGSSDP; C-terminal tail, NM_00978)

ご注意 : 本商品には 0.1 % 未満のアジ化ナトリウムが入っています。誤って目や口に入ったり、皮膚に付着した場合は大量の水で洗い流してください。

Specificity : mouse (others not tested)

Almost blank labeling in $\alpha 1G$ -KO brain. Guinea pig $\alpha 1G$ antibody produces high signals than rabbit one.



Applications : In general, affinity-purified antibody is used at around 1 microgram/ml for immunoblot and immunohistochemistry. The most appropriate concentration should be determined by users, because it depends on contents in given cells, tissues and organs.

Research Use : For research use only, not for use in diagnostic procedures.

Reference : 1) Hildebrand ME, Isope P, Miyazaki T, Nakaya T, Garcia E, Feltz A, Schneider T, Hescheler J, Kano M, Sakimura K, Watanabe M, Dieudonne S, Snutch TP: Functional coupling between mGluR1 and Cav3.1 T-type calcium channels underlies parallel fiber-induced fast calcium signaling within Purkinje cell dendritic spines. **J. Neurosci.** 29: 9668-9682, 2009.
2) Parajuli LK, Fukazawa Y, Watanabe M, Shigemoto R: Subcellular Distribution of alpha 1G Subunit of T-type Calcium Channel in the Mouse Dorsal Lateral Geniculate Nucleus. **J. Comp. Neurol.** 518:4362-4374, 2010.

ご注意 : 本商品には 0.1 % 未満のアジ化ナトリウムが入っています。 誤って目や口に入ったり、皮膚に付着した場合は大量の水で洗い流してください。

Distributor : NITTOBO MEDICAL CO., LTD
TEL : +81-(0)3-4582-5451
email : nmd-tokuhan@nittobogrp.com

Manufacture : FRONTIER INSTITUTE CO., LTD