

## *Anti-VGluT1*

*(vesicular glutamate transporte-1)*

**Code Number** : VGluT1-Rb-Af500 (rabbit, RRID : AB\_2571616)  
: VGluT1-Go-Af310 (goat, RRID : AB\_2571617)  
: VGluT1-GP-Af570 (guinea pig, RRID : AB\_2571618)

**Size** : 20 µg and 50 µg / See label on vial  
(affinity-purified with antigen polypeptide)

**Formulation** : Liquid ; 200 µg/ml in PBS with 0.05% NaN<sub>3</sub>.

**Storage** : Store at cool temp (2-10°C).

The antibody can be stored at 2-10°C. The antibody can be also aliquotted and stored at -80°C for long-term storage. Avoid repeated freeze-thawing. Non-hazardous. No MSDS required.

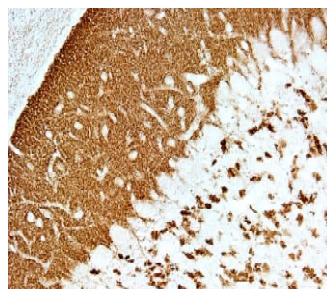
**Species** : rabbit / guinea pig / goat , polyclonal

**Antigen** : Mouse VGluT1, C-terminal 531-560 aa (BC054462)

**Specificity** : mouse (others not tested)

Immunoblot detects a single protein band at 60 kDa.

This selectively stains distinct populations of glutamatergic neurons, particularly their terminals. This is also useful marker to visualize parallel fiber terminals innervating Purkinje cells and corticostriatal afferent terminals.



**Applications** : In general, affinity-purified antibody is used at around 1 microgram/ml for immunoblot and immunohistochemistry. The most appropriate concentration should be determined by users, because it depends on contents in given cells, tissues and organs.

ご注意 : 本商品には 0.1 % 未満のアジ化ナトリウムが入っています。誤って目や口に入ったり、皮膚に付着した場合は大量の水で洗い流してください。

Distributor : NITTOBO MEDICAL CO., LTD  
TEL : +81-(0)3-4582-5451  
email : nmd-tokuhan@nittobogrp.com

Manufacture : FRONTIER INSTITUTE CO., LTD

**Research Use** : For research use only, not for use in diagnostic procedures.

**Remarks** : Rabbit and guinea pig antibodies are similar in the titer and specificity.

**Reference** : 1) Miyazaki, T., Fukaya, M., Shimizu, H, Watanabe, M. (2003) Developmental switching of vesicular glutamate transporters at parallel fiber-Purkinje cell synapses. **Eur. J. Neurosci** 17:2563-2572.

2) Kawamura, Y., Fukaya, M., Maejima, T., Yoshida, T., Miura, E., Watanabe, M., Ohno-Shosaku, T., Kano, M. (2006) CB1 is the major cannabinoid receptor at excitatory presynaptic site in the hippocampus and cerebellum. **J. Neurosci.**, 26:2991-3001.

3) Miura, E., Fukaya, M., Sato, T., Sugihara, K., Asano, M., Yoshioka, K., Watanabe, M. (2006) Expression and distribution of JNK/SAPK-associated scaffold protein JSAP1 in developing and adult mouse brain. **J. Neurochem.** 97:1431-1446.

ご注意：本商品には 0.1 % 未満のアジ化ナトリウムが入っています。誤って目や口に入ったり、皮膚に付着した場合は大量の水で洗い流してください。

Distributor : NITTOBO MEDICAL CO., LTD  
TEL : +81-(0)3-4582-5451  
email : nmd-tokuhan@nittobogrp.com

Manufacture : FRONTIER INSTITUTE CO., LTD