

Anti-Synaptophysin

Product Information:

1)	Catalog #:	MSFR105660
	Item Name:	Synaptophysin pAb (Rb) 20ug
	Size :	20µg (affinity-purified with antigen polypeptide)
	Species :	Rabbit
	Product Code :	Syn-Rb-Af300
	RRID :	AB_2571842
2)	Catalog #:	MSFR105670
	Item Name:	Synaptophysin pAb (Rb) 50ug
	Size :	50µg (affinity-purified with antigen polypeptide)
	Species :	Rabbit
	Product Code :	Syn-Rb-Af300
	RRID :	AB_2571842
3)	Catalog #:	MSFR105680
	Item Name:	Synaptophysin pAb (GP) 20ug
	Size :	20µg (affinity-purified with antigen polypeptide)
	Species :	Guinea pig
	Product Code :	Syn-GP-Af300
	RRID :	AB_2571843
4)	Catalog #:	MSFR105690
	Item Name:	Synaptophysin pAb (GP) 50ug
	Size :	50µg (affinity-purified with antigen polypeptide)
	Species :	Guinea pig
	Product Code :	Syn-GP-Af300
	RRID :	AB_2571843
5)	Catalog #:	MSFR105700
	Item Name:	Synaptophysin pAb (Go) 20ug
	Size :	20µg (affinity-purified with antigen polypeptide)
	Species :	Goat
	Product Code :	Syn-Go-Af1300
	RRID :	AB_2572271
6)	Catalog #:	MSFR105710
	Item Name:	Synaptophysin pAb (Go) 50ug
	Size :	50µg (affinity-purified with antigen polypeptide)
	Species :	Goat
	Product Code :	Syn-Go-Af1300
	RRID :	AB_2572271

Formulation : Liquid ; 200 µg/ml in PBS with 0.05% NaN₃.

(affinity-purified with antigen polypeptide)

Storage : Store at cool temp (2-10°C).

The antibody can be stored at 2-10°C. The antibody can be also aliquoted and stored at -80°C for long-term storage. Avoid repeated freeze-thawing. Non-hazardous. No MSDS required.

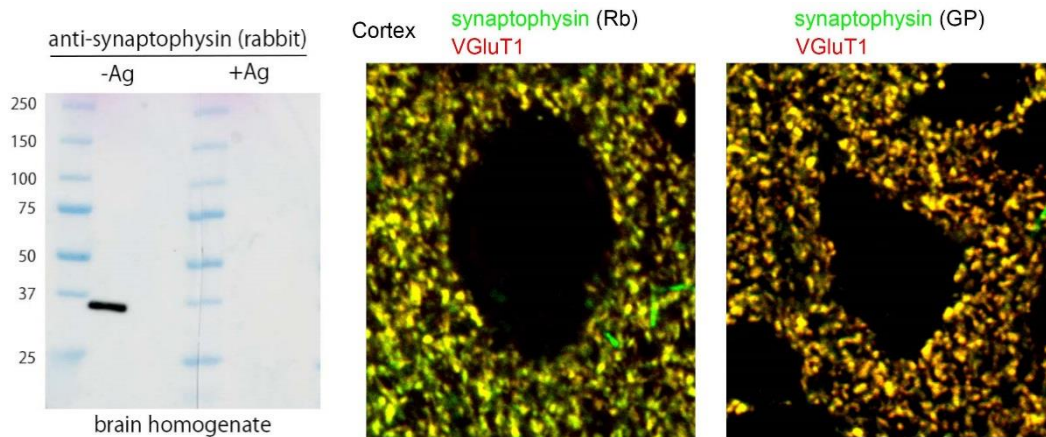
Species : rabbit / guinea pig, polyclonal

ご注意 : 本商品には 0.1 % 未満のアジ化ナトリウムが入っています。誤って目や口に入ったり、皮膚に付着した場合は大量の水で洗い流してください。

Antigen : mouse synaptophysin, 205-259 aa (X95818)

Specificity : mouse (others not tested)

Immunoblot detects a single protein band at 38 kDa. This selectively stains nerve terminals.



Applications : In general, affinity-purified antibody is used at around 1 microgram/ml for immunoblot and immunohistochemistry. The most appropriate concentration should be determined by users, because it depends on contents in given cells, tissues and organs.

Research Use : For research use only, not for use in diagnostic procedures.

Remarks: Immunohistochemical patterns with use of rabbit and guinea pig antibodies are essentially the same, with specific labeling of nerve terminals. In the cerebral cortex and hippocampus, synaptophysin is exclusively overlapped with other terminals markers, including vesicular glutamate transporter VGluT1. For use in immunoblot, rabbit antibody is recommended.

Reference : 1) Fukaya, M., Watanabe, M. (2000) Improved immunohistochemical detection of postsynaptically-located PSD-95/SAP90 protein family by protease section pretreatment. A study in the adult mouse brain. *J. Comp. Neurol.* 426:572-586.
2) Yamada, K., Fukaya, M., Shimizu, H., Sakimura, K., Watanabe, M. (2001) NMDA receptor subunits GluR ϵ 1, GluR ϵ 3, and GluR ζ 1 are enriched at the mossy fiber-granule cell synapse in the adult mouse cerebellum. *Eur. J. Neurosci.* 13:2025-2036.

ご注意 : 本商品には 0.1 % 未満のアジ化ナトリウムが入っています。 誤って目や口に入ったり、皮膚に付着した場合は大量の水で洗い流してください。